

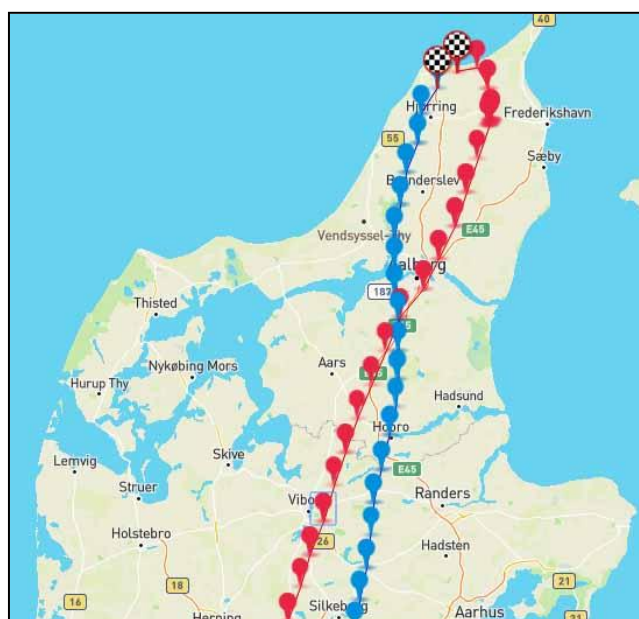
GPS in pigeon racing 2024

Ove Fuglsang Jensen Denmark

New setup in article

In 2022/23 there has been 2 new setups in showing the routes of the pigeons. If there are 2 pigeons in the same race, one can compare the routes of the two pigeons, and also compare the speed, height and length of the route.

You can here see an example of maps with 2 routes and the statistics of the flight of the pigeons.



| | Average speed | Top speed | Average height | Max height | Distance | Distance flown |
|-------|---------------|-----------|----------------|------------|----------|----------------|
| 130 A | 1451 | 1799 | 211 | 623 | 511 | 524 |
| 133 U | 1493 | 1992 | 236 | 736 | 511 | 541 |

Brædstrup 11. May



In this sprint race over a short distance it is obvious that the short distances are the most fast.

The red pigeon are 9 minutes before the blue, and even if the blue pigeon have the relative highest speed.

| | Average speed | Top speed | Average height | Max height | Distance | Distance flown |
|-------|---------------|-----------|----------------|------------|----------|----------------|
| 467U | 1241 | 1440 | 231 | 485 | 174 | 196 |
| 1613U | 1148 | 1384 | 175 | 263 | 174 | 188 |

Download Brædstrup 11. May:

Wind easy South West

<https://skyleader.com.tw/share/20240722ywY6Cp>

<https://skyleader.com.tw/share/20240722jy761W>

Vejen 25. May



It looks like the blue pigeon are the most fast, but the red pigeon have a higher speed and arrive 8 minutes before blue pigeon.

| | Average speed | Top speed | Average height | Max height | Distance | Distance flown |
|-------|---------------|-----------|----------------|------------|----------|----------------|
| 467U | 1006 | 1614 | 59 | 130 | 236 | 248 |
| 1613U | 1143 | 1575 | 61 | 199 | 236 | 241 |

Download Vejen 25. May:

Wind is easy from the east

<https://skyleader.com.tw/share/20241220hys741>

<https://skyleader.com.tw/share/20241220b60ufP>

Heide 1. June



The 1. June there are 2 solar flares in daytime, and this will influence the routes and speed of the pigeons! The red pigeon have a stop in the race because of solar flare. Fist pigeon in race: 23, 25/276 in Section and I got all my pigeons home!

| | Average speed | Top speed | Average height | Max height | Distance | Distance flown |
|-------|---------------|-----------|----------------|------------|----------|----------------|
| 146U | 925 | 1348 | 73 | 169 | 382 | 394 |
| 1613u | 595 | 1541 | 57 | 343 | 382 | 394 |

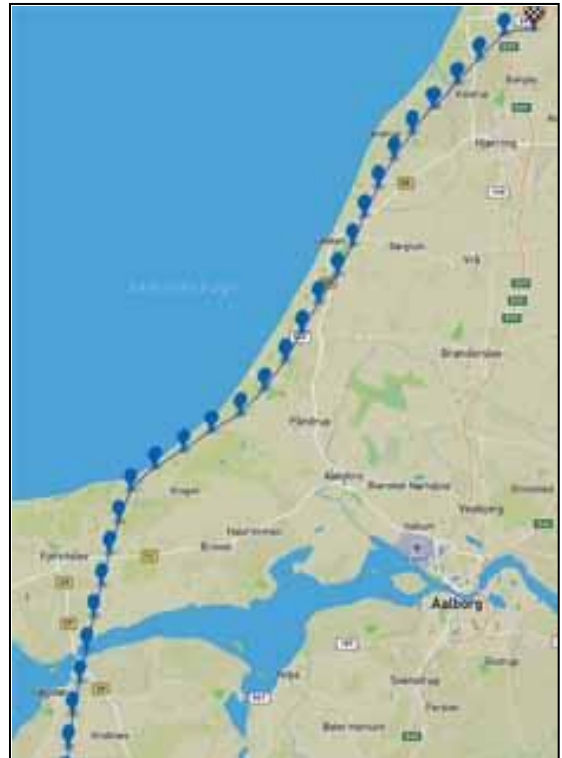
Download Heide 1.June

Wind is easy from north east

<https://skyleader.com.tw/share/20241221Q4p2LS>

<https://skyleader.com.tw/share/20241221Xkdm85>

Åbenrå 1. June



Here it is the same with solarflares from the sun wich can disturb the one year old pigeons. The route seems rather straght but the pigeon goes down in speed. 1607 have parents of the old racers Megens/Vermote .

| | Average speed | Top speed | Average height | Max height | Distance | Distance flown |
|-------|---------------|-----------|----------------|------------|----------|----------------|
| 1607A | 1043 | 1485 | 71 | 338 | 282 | 300 |

Download Åbenrå 1. June:

Wind is easy from northeast

<https://skyleader.com.tw/share/20241222zIrUOK>

Lübeck 9. June



Blue and red pigeon follow the same route but cross over and goes west or east. If it is a rain cloud is not known. These two pigeons are a little behind, but I am 11,19,26 and 30/168 in Section.

| | Average speed | Top speed | Average height | Max height | Distance | Distance flown |
|------|---------------|-----------|----------------|------------|----------|----------------|
| 146U | 1149 | 1836 | 58 | 415 | 412 | 457 |
| 443A | 1064 | 1779 | 112 | 256 | 412 | 457 |

Download Lübeck 9. June:

Wind is steady from south west

<https://skyleader.com.tw/share/20241221gQYRK9>

<https://skyleader.com.tw/share/20241224FGGxZr>

Brædstrup 9. June



This is a typical short distance race in high speed specially along the coast where the blue pigeon reach a speed of 127 Km/hour. Even if the red pigeon have a shorter distance, the blue pigeon are first on loft because of the high speed.

| | Average speed | Top speed | Average height | Max height | Distance | Distance flown |
|-------|---------------|-----------|----------------|------------|----------|----------------|
| 1602A | 1404 | 2129 | 109 | 279 | 174 | 193 |
| 467U | 1392 | 1950 | 90 | 225 | 174 | 187 |

Download Brædstrup 9. June:

Wind steady from South West

<https://skyleader.com.tw/share/20241225Xgy94r>

<https://skyleader.com.tw/share/2024122518bPrA>

Hildesheim 16. June



The hen 146 has made many good races in GPS, but in this relative short long race she is not on her best. The wind are steady from the south and can give good speed and good height in the race.

Anyway I have pigeons in the top: 4, 17, 20 and 29/138.

| | Average speed | Top speed | Average height | Max height | Distance | Distance flown |
|------|---------------|-----------|----------------|------------|----------|----------------|
| 146U | 1218 | 2021 | 208 | 521 | 595 | 661 |

Download Hildesheim 16. juni:

Wind steady from South

<https://skyleader.com.tw/share/20241226Bhj8MP>

Husum 29. June



Red pigeon have a longer route but are anyway first and properly because of the high speed. The wind are steady southwest and give good speed and height in the race!

In top I have: 2, 3, 7, and 9/339. Pigeons 3 -7 are one year old.

| | Average speed | Top speed | Average height | Max height | Distance | Distance flown |
|-------|---------------|-----------|----------------|------------|----------|----------------|
| 446A | 1336 | 1644 | 129 | 224 | 346 | 363 |
| 1614A | 1404 | 1886 | 105 | 143 | 346 | 368 |

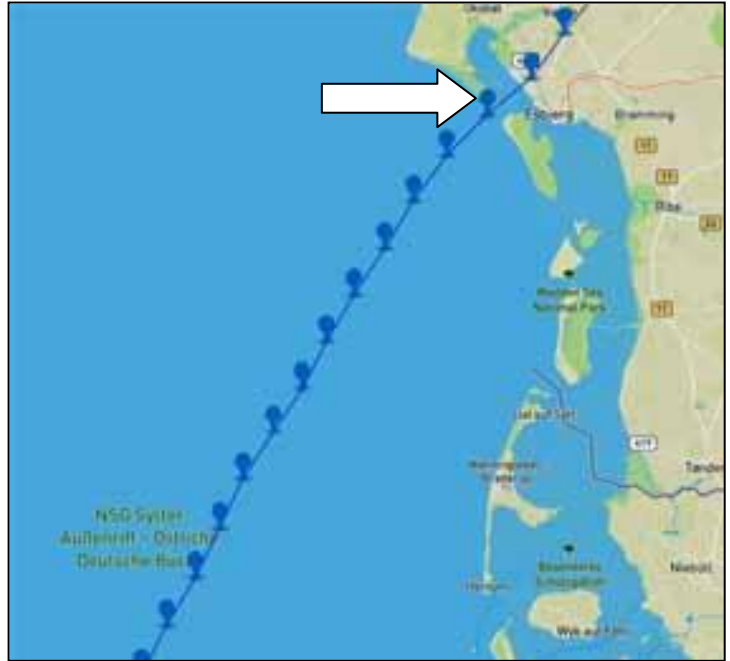
Download Husum 29. June:

Wind steady South West

<https://skyleader.com.tw/share/20241229WyhwJF>

<https://skyleader.com.tw/share/202412290wZogR>

Göttingen 29. June



When the pigeons fly from a coast into open water they fly fairly high and this cock 464 rise to 750 meters and further out lowers to few hundred meters, and when the pigeon see the coast it is on 222 meters in 1493 mpm. At the next plot the pigeon are in 50 meters in 2672mpm. (160km/hour). Look at white arrow!

The wind are steady south west and the pigeon goes downwards which gives this stunning top speed at 100 miles per hour!.

Top results: 21, 26, og 29/118.

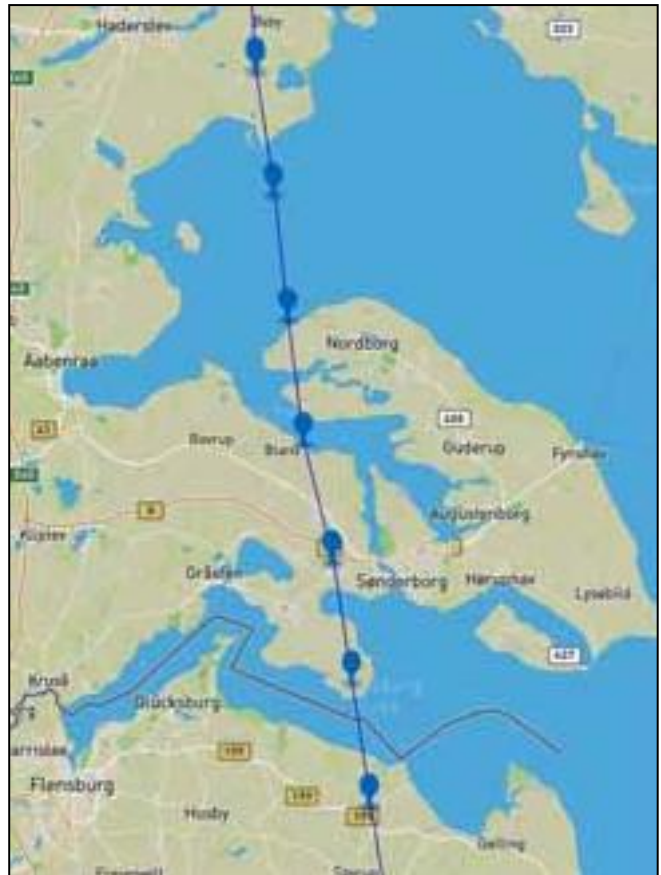
| | Average speed | Top speed | Average height | Max height | Distance | Distance flown |
|------|---------------|-----------|----------------|------------|----------|----------------|
| 464A | 1130 | 2672 | 239 | 754 | 677 | 802 |

Download Göttingen 29. June:

Wind steady South West

<https://skyleader.com.tw/share/202406290LbSj6>

Lüneborg 7. July



At the easterly release points the pigeons many times goes at certain routes shown in the little map. The cock 464 are in middle of race but my top results are fairly good: 4, 13, 40, 43, 55 and 55/222.

| | Average speed | Top speed | Average height | Max height | Distance | Distance flown |
|------|---------------|-----------|----------------|------------|----------|----------------|
| 464A | 1349 | 1815 | 69 | 189 | 476 | 486 |

Download Lüneborg 7. July:

Wind fresh South West

<https://skyleader.com.tw/share/20241230XRfCuS>

Carlstorf 20. July



At Carlstorf this day there are an active Subsiding Inversion but the cock 464 had obviously no problem and became 46/263. As seen on picture above the pigeon hits the towns of Åbenrå and Vamdrup where the sprint races are and the pigeon knows the way! Place in top: 37, 38, 46, 59 and 64/263.

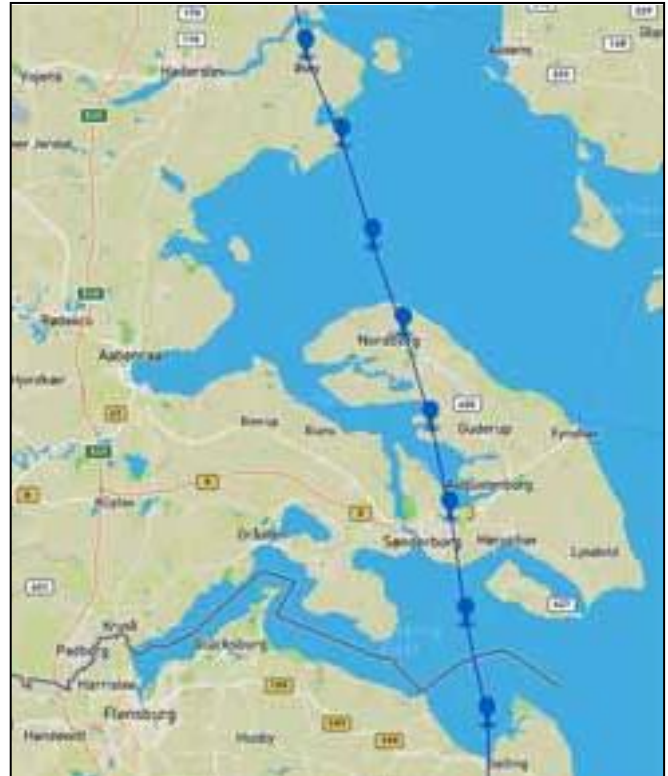
| | Average speed | Top speed | Average height | Max height | Distance | Distance flown |
|------|---------------|-----------|----------------|------------|----------|----------------|
| 464A | 1259 | 2078 | 181 | 543 | 481 | 498 |

Download Carlstorf 20. juli:

Wind easy from east - 24 Celsius

<https://skyleader.com.tw/share/20241212NqjFVH>

Altona 3. August



When opening the route it starts in the sea because of technical error. Zoom in on the start. Zoom in on release place (Picture next page). Picture above shows the route as many pigeons take released in northeastern Germany.

Top results: 22 og 41/240.

| | Average speed | Top speed | Average height | Max height | Distance | Distance flown |
|-------|---------------|-----------|----------------|------------|----------|----------------|
| 1627A | 1253 | 1460 | 155 | 428 | 437 | 451 |

Download Altona 3. august:

Wind in start easy from east- In the north wind from west

<https://skyleader.com.tw/share/202501023ilS1L>

Realease points

Some release points

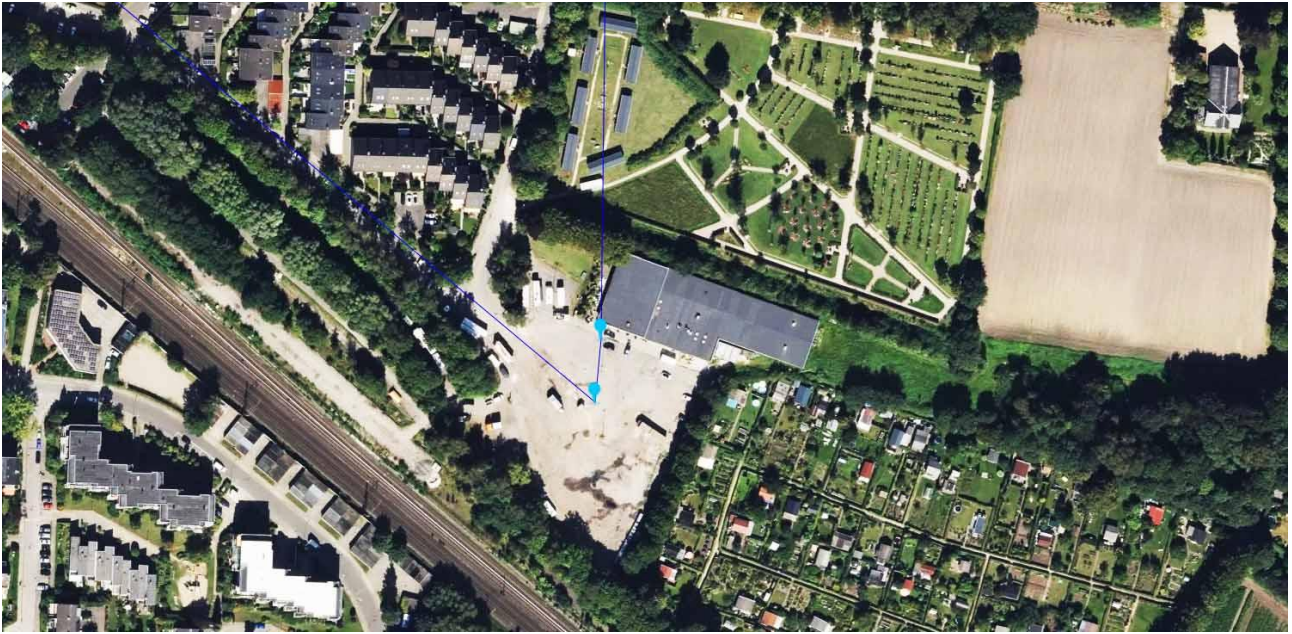
Sometimes if the pigeon with a GPS ring are sitting in the right basket in the top of the lorry, one can see the very start of the pigeon.

Our release places are decided by the German where they wont our pigeons shall be released, and usually it is where the lorries can park.

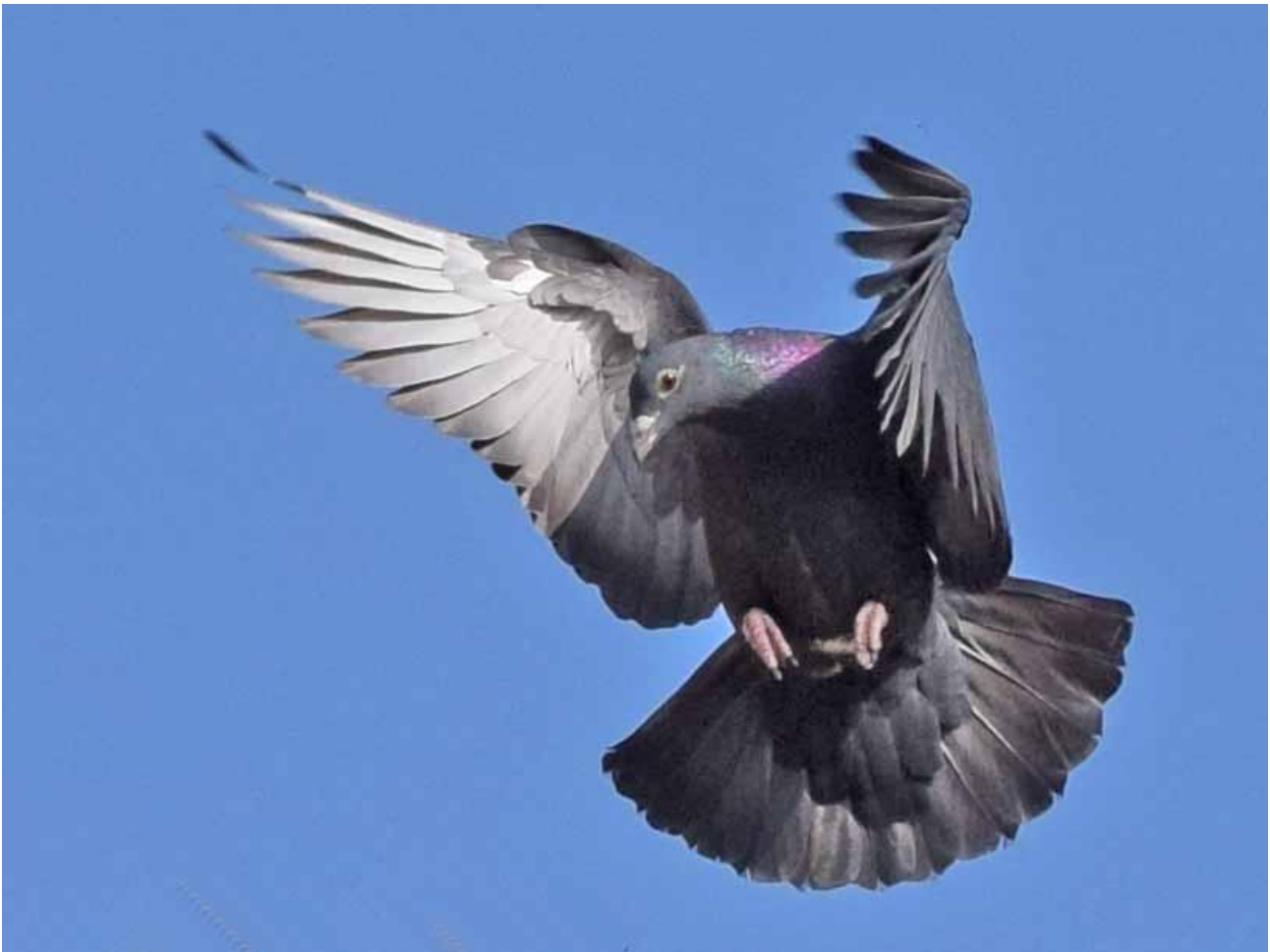


Zooming in on Münster you can see it is typical farming country like in Denmark.

The release site are in the south end of town in a parkingplace for lorries (White arrow). There are a smaller road along parking place, but it is proberly not with much traffic because the pigeon going across.



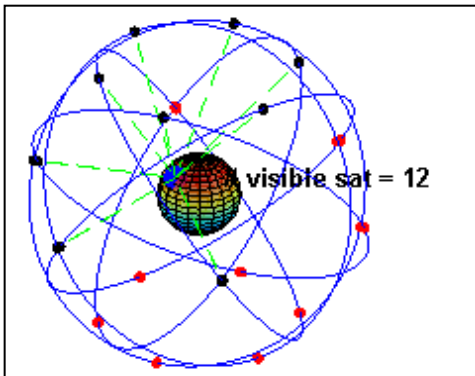
The release site in Altona. Hamburg.



Long distance pigeon from the old Megens.

How it works in GPS ring

GPS works on satellite



The GPS system is working on the contact to satellite US Army have placed in orbit. As seen on the picture there are 12 satellites covering half of the earth and that is 24 covering the whole earth. If you have an GPS in your car it takes properly 4 satellites, but other more advanced GPS takes more satellites. The US army are constantly checking the position of the satellites.

GPS ring for pigeons



The GPS ring I use are Skyleader from Taiwan and a ring have a weight of 4 gram. These rings are very easy to use where a loaded battery is fixed on the ring and there after fixed in the computer to start a special day and time. The battery can last 35-40 hours set on 6 minutes plots but 3 minutes plots are less time.

How does the GPS ring work?

The GPS ring is put on the pigeon before it is packed in a basket. Normally I set a ring for 06.00 and normally the pigeons are released between 06.30 to 08.00 in the morning. When the ring starts in the set time it should show where the lorry stands. Sometimes it shows where the lorry stands, but other times the ring starts when the pigeons are released and the GPS ring have contact to the satellite. If the pigeon with a GPS ring are placed in top of the lorry it have contact, but are the pigeon in the bottom the GPS ring cannot reach the satellite. When a pigeon with a GPS ring are released it takes normally 3 to 6 minutes before the ring are active and the pigeon are then some kilometers away from the release site.

How precise are GPS on a pigeon?

When the pigeons are released they take a route in 50 to 2-300 meters height or more. The precision of the data the GPS ring are showing are very precise and why? In the beginning of Skyleaders GPS rings they show how many satellites they have in contact of the 12 satellites. The GPS ring on a pigeon usually have contact with 6-8 satellites, and that means the data shown are very precise. Underneath I have pasted a video from YOUTUBE showing the type of rockets leads by GPS and they can hit a target in very high precision. A pigeon flying in the air with a GPS ring are just as precise as a rocket lead by GPS!

<https://www.youtube.com/watch?v=HCZhUanOZ3I>

